

Ruby Deep Elite Optional Drawer Interiors

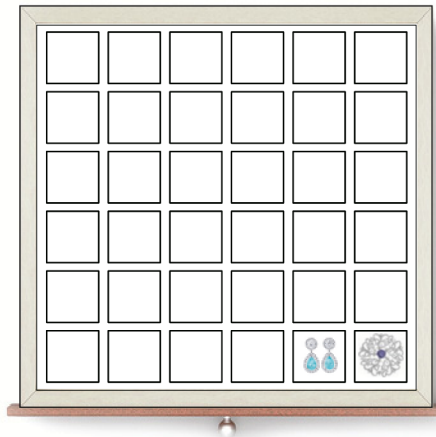
Drawer interior is 12.5" wide x 15" deep x 1.5" or 3.5" high

Layout A



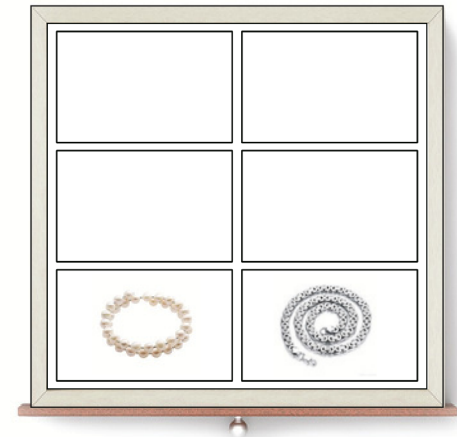
25 Medium Compartments
Size: 2" x 2.5"

Layout B



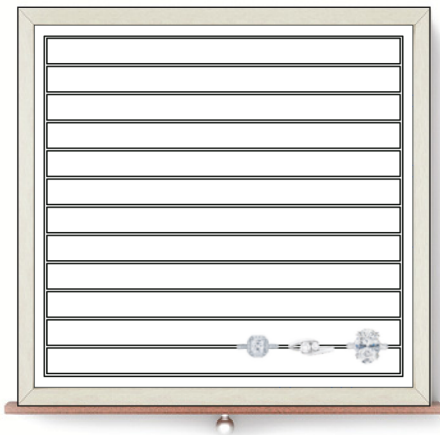
36 Small Compartments
Size: 1.75" x 1.75"

Layout C



6 Large Compartments
Size: 5.75" x 4.25"

Layout D



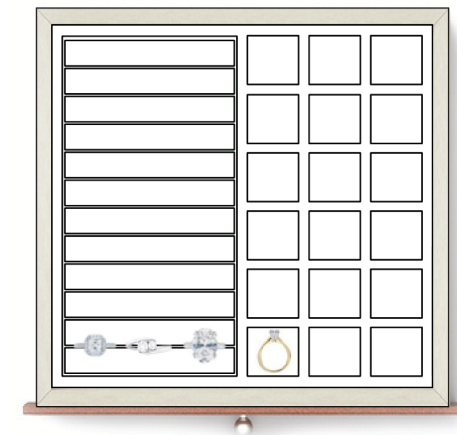
Rings, Earrings
Grooved Jewelry Holders
16 Rows of Grooves

Layout F



Mixed Use
Combination Grooved Jewelry
Holders & Open
Compartment

Layout FB

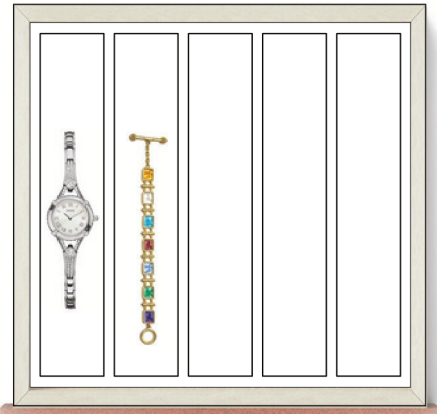


Mixed Use
Grooved Jewelry Holders &
18 Small Compartments
1.75" x 1.75"

Ruby Deep Elite Optional Drawer Interiors

Drawer interior is 12.5" wide x 15" deep x 1.5" or 3.5" high

Layout H



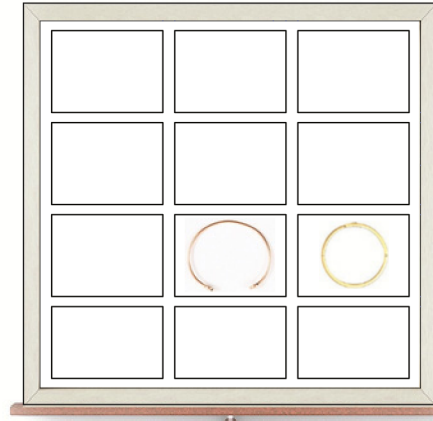
Tennis Bracelets, Chains, Necklaces
Five 2" Wide Channels

Layout J



Mixed Use
Padded holders for Kings + earrings
24 small compartments

Layout K



Bangles & Cuffs
Nine 3.75" x 3" Compartments

Open



Open
No dividers

Layout N



Sets
One 8.75 x 8", Two 8.75" x 2"
One 8" x 1.75", Two 1.75" x 2"

Layout W



Watches, Brooches & Pendants
Twelve 2.75" x 3"
Add \$8/pillow (w/ 3.5" high only)

Layout CD



Cash & General Purpose
Four Bills & One 12.25" x 3.75"

Layout CP



Cash & Passport
2 Bill & One 6.75" x 6" Passport