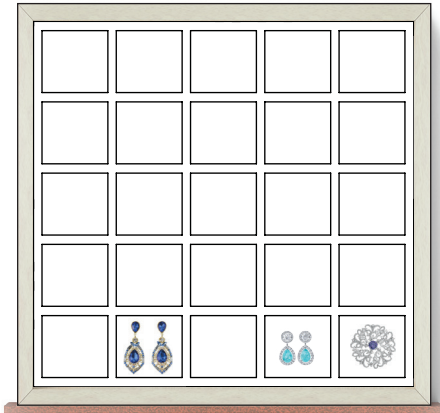


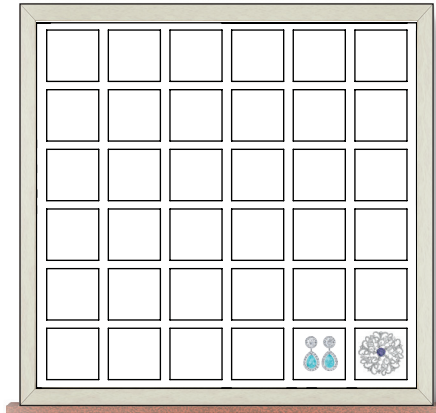
Drawer interior is 12.5" wide x 13.5" deep x 1.5" or 3.5" high

**Layout A**



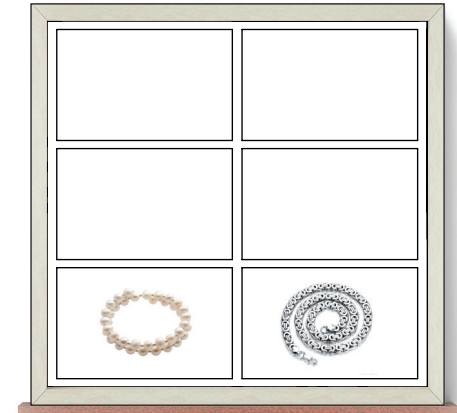
**25 Medium Compartments**  
Size: 2" x 2.5"

**Layout B**



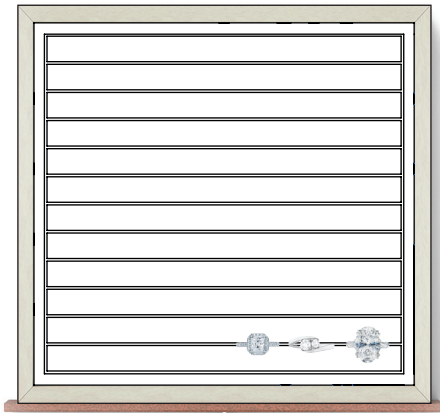
**36 Small Compartments**  
Size: 1.75" x 1.75"

**Layout C**



**6 Large Compartments**  
Size: 5.75" x 4.25"

**Layout D**



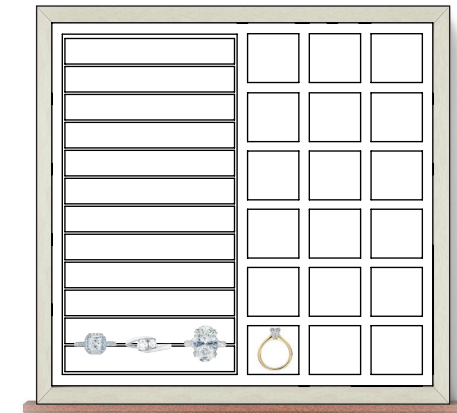
**Rings, Earrings**  
Grooved Jewelry Holders  
16 Rows of Grooves

**Layout F**



**Mixed Use**  
Combination Grooved Jewelry  
Holders & Open Compartment

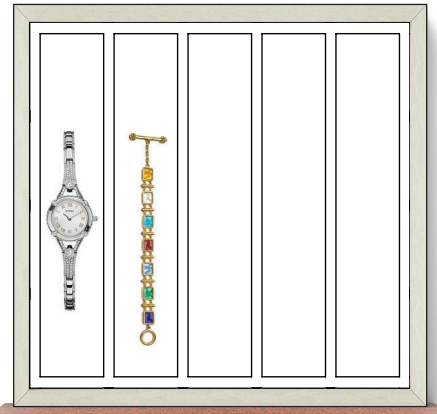
**Layout FB**



**Mixed Use**  
Grooved Jewelry Holders &  
18 Small Compartments  
1.75" x 1.75"

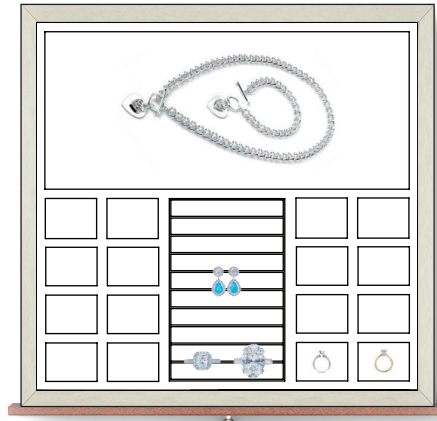
Drawer interior is 12.5" wide x 13.5" deep x 1.5" or 3.5" high

**Layout H**



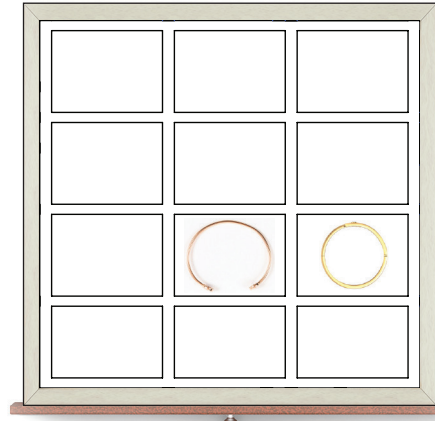
**Tennis Bracelets, Chains, Necklaces**  
Five 2" Wide Channels

**Layout J**



**Mixed Use**  
Padded holders for Kings + earrings  
24 small compartments

**Layout K**



**Bangles & Cuffs**  
Nine 3.75" x 3" Compartments

**Open**



**Open**  
No dividers

**Layout N**



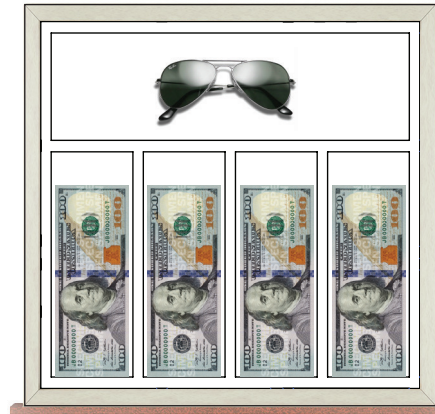
**Sets**  
One 8.75 x 8", Two 8.75" x 2"  
One 8" x 1.75", Two 1.75" x 2"

**Layout W**



**Watches, Brooches & Pendants**  
Twelve 2.75" x 3"  
Add \$8/pillow (w/ 3.5" high only)

**Layout CD**



**Cash & General Purpose**  
Four Bills & One 12.25" x 3.75"

**Layout CP**



**Cash & Passport**  
2 Bill & One 6.75" x 6" Passport