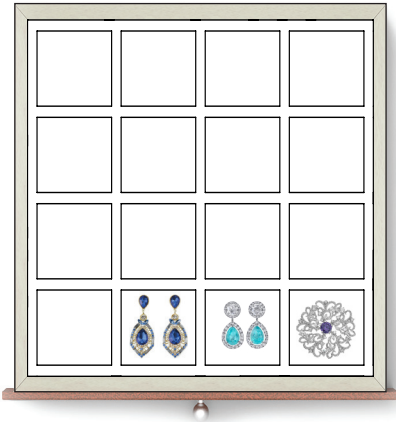


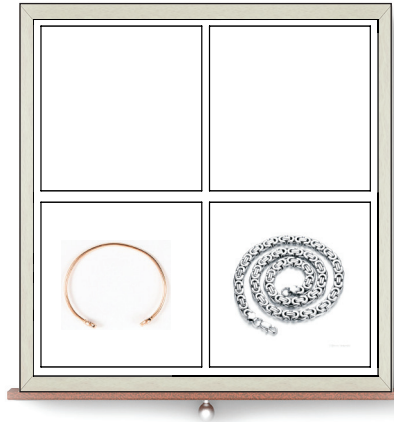
Drawer interior is 8.5" wide x 9" deep x 1.5" or 2.5" high

Layout A



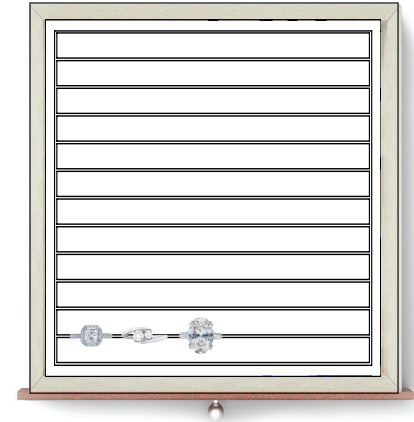
Earrings, Pendants, Chains
Medium 1.75" x 2" compartments

Layout C



Bangles & Cuffs
Four 3.5" x 4" Compartments

Layout D



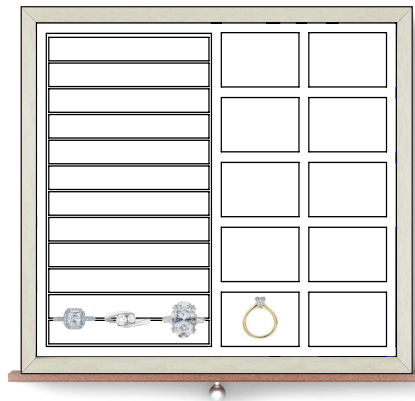
Rings, Earrings
Grooved ring and earring holders

Layout F



Mixed Use
Combination grooved jewelry holders & open compartment

Layout F/B



Mixed Use
Grooved Jewelry Holders & Small Compartments

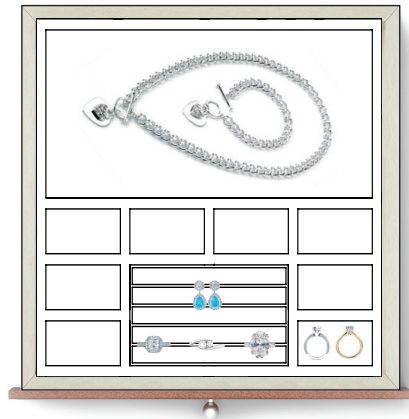
Layout H



Tennis Bracelets, Chains, Necklaces
Three Channels 2.5" wide

Drawer interior is 8.5" wide x 9" deep x 1.5" or 2.5" high

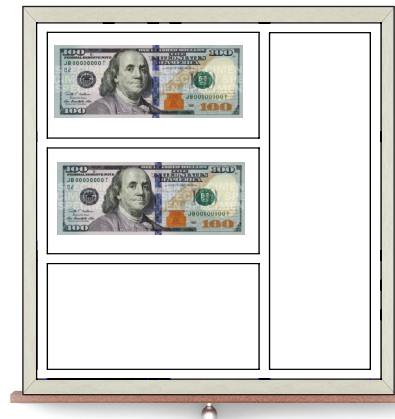
Layout J



Mixed Use

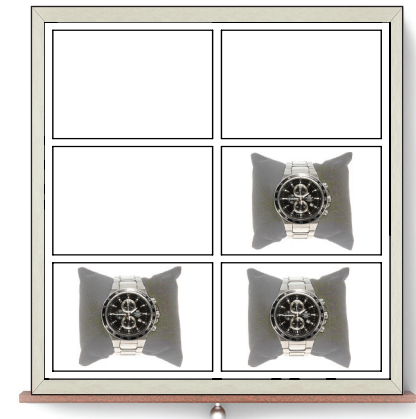
Jewelry Compartments & Rows
Of Grooves For Rings & Earrings

Layout CD



Cash & General Purpose
Bill, Coin or Key Compartment

Layout W



Watches

3.5" x 3" Compartments
Add pillows (fits in min 2.5" high)

Open Layout



Open
No dividers