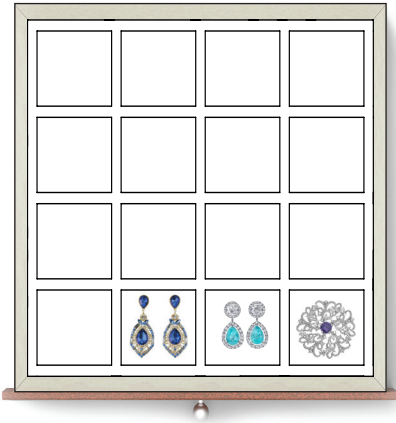


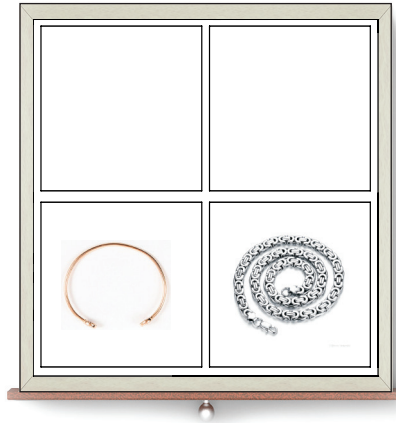
Drawer interior is 8.5" wide x 9" deep x 1.5" or 2.5" high

**Layout A**



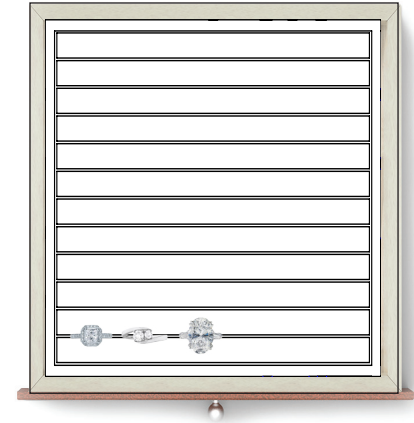
**Earrings, Pendants, Chains**  
Medium 1.75" x 2" compartments

**Layout C**



**Bangles & Cuffs**  
Four 3.5" x 4" Compartments

**Layout D**



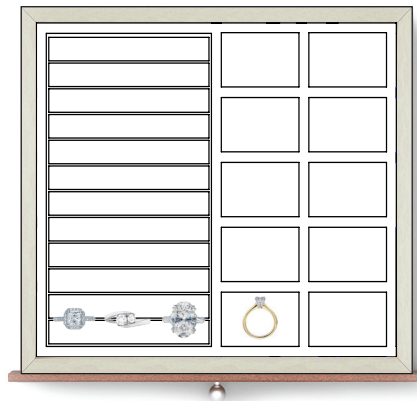
**Rings, Earrings**  
Grooved ring and earring holders

**Layout F**



**Mixed Use**  
Combination grooved jewelry holders & open compartment

**Layout F/B**



**Mixed Use**  
Grooved Jewelry Holders & Small Compartments

**Layout H**



**Tennis Bracelets, Chains, Necklaces**  
Three Channels 2.5" wide

Drawer interior is 8.5" wide x 9" deep x 1.5" or 2.5" high

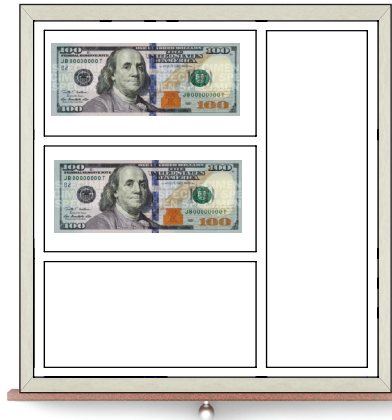
**Layout J**



**Mixed Use**

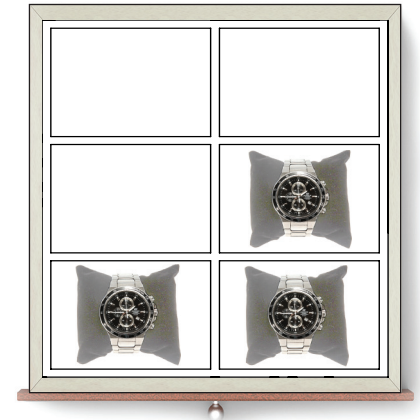
Jewelry Compartments & Rows  
Of Grooves For Rings & Earrings

**Layout CD**



**Cash & General Purpose**  
Bill, Coin or Key Compartment

**Layout W**



**Watches**

3.5" x 3" Compartments  
Add \$8/pillow (fits in min 2.5" high)

**Open Layout**



**Open**  
No dividers