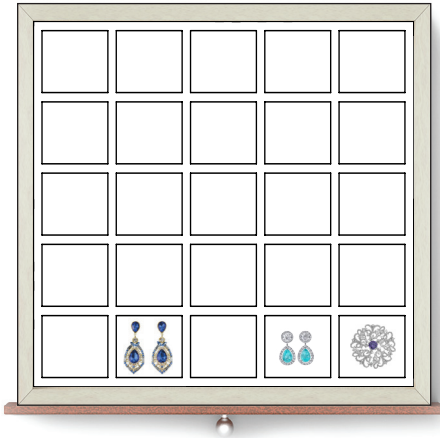


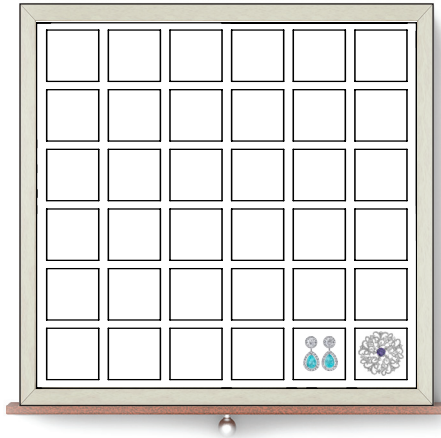
Drawer interior is 12.5" wide x 13.5" deep x 1.5" or 3.5" high

Layout A



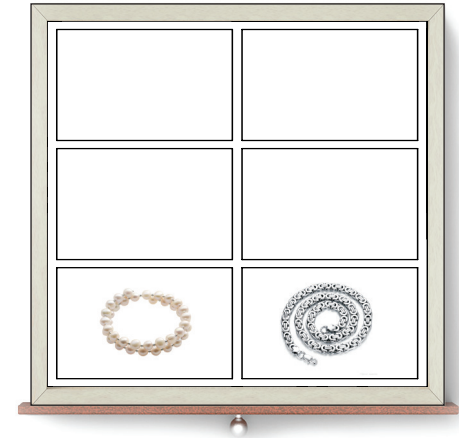
Medium Compartments
Size: 2.5" x 2"

Layout B



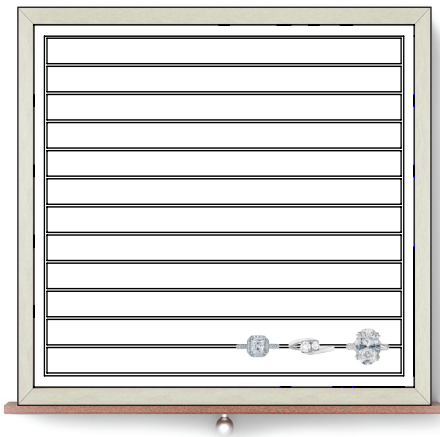
Small Compartments
Size: 1.75" x 1.75"

Layout C



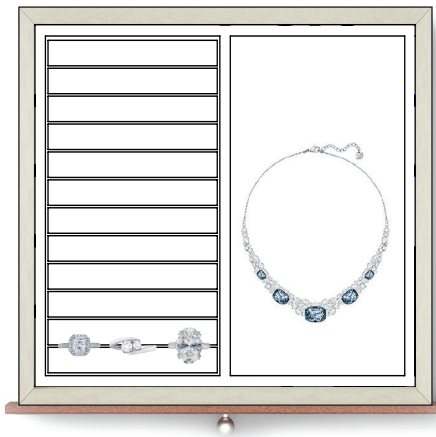
Large Compartments
Size: 5.75" x 5"

Layout D



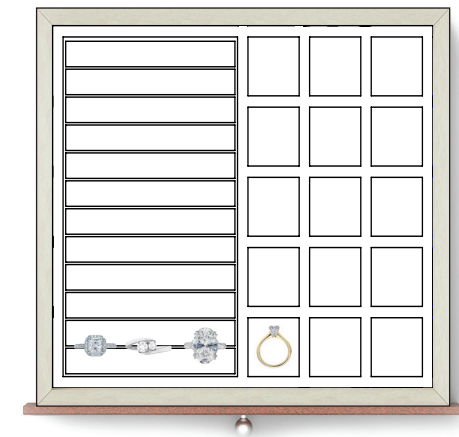
Rings, Earrings
Grooved Jewelry Holders
16 Rows of Grooves

Layout F



Mixed Use
Combination Grooved Jewelry
Holders & Open Compartment

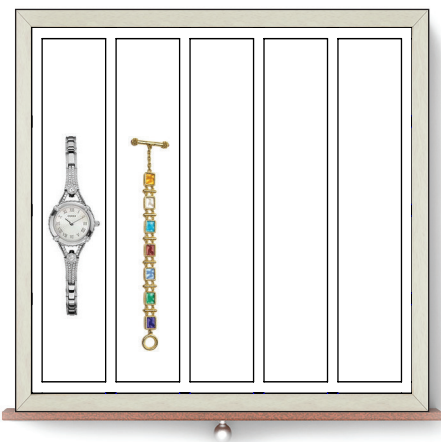
Layout F/B



Mixed Use
Grooved Jewelry Holders &
Small Compartments

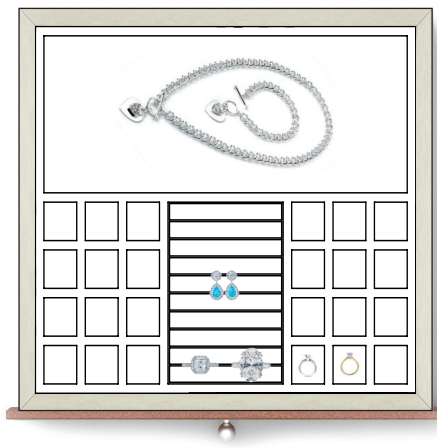
Drawer interior is 12.5" wide x 13.5" deep x 1.5" or 3.5" high

Layout H



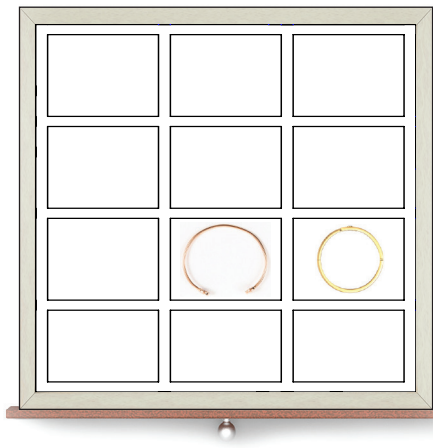
Tennis Bracelets, Chains, Necklaces
Five 2" Wide Channels

Layout J



Mixed Use
7 x 4" Grooves, 12 x Compartments
5.5" Deep Rear Compartment

Layout K



Bangles & Cuffs
Nine 3.75" x 3.25" Compartments

Open



Open
No dividers

Layout N



Sets
One 8.75 x 8", Two 8.75" x 2"
One 8" x 1.75", Two 1.75" x 2"

Layout W



Watches, Brooches & Pendants
Twelve 2.75" x 3.25"
Add \$8/pillow (w/ 3.5" high only)

Layout CD



Cash & General Purpose
Four Bills & One 12.25" x 3.75"

Layout CP



Cash & Passport
2 Bill & One 6.75" x 6" Passport